



Here We Grow

A YEAR OF GROWING IMPACT AND
COMMUNITY CONNECTIONS



IMPACT REPORT 2025-2026

Contents

Our Staff and Board	3
Message from Chair and CEO	4
Impact by the Numbers	6
The Year at a Glance	7
CommUNITY for Women Event	8
Emergent Women and Children's Fund	9
Charity PD Day	10
Charity Resource Hub	11
Grant Impact	12
2025 Granting	13
Tom Webb's Story	14
Friendraiser	15
Planting Seeds Season 3	16
Farmland Donations	17
Charity Funds	18
SUMAINvest	19
In Memoriam	20
Legacy Circle	22
Celebrating National Philanthropy Day	23
Fund Appreciation Wall	24
Financials	26

Saskatchewan Community Foundation acknowledges our presence on lands covered by Treaty 2, 4, 5, 6, 8, and 10 territories: the traditional lands of the Cree, Dene, Ojibwe, Saukteaux, Dakota, Nakota, Lakota, and on the homeland of the Métis.

We pay respect to the First Nations and Métis ancestors of this place and reaffirm our relationship with one another. Acknowledging the land is respectful of the relationships we have and honours the authentic history of this country and its original people.

Staff



Donna Ziegler
CEO



Tiffany Caron
Community Investment
& Data Officer



Bridget Pottle
Executive Coordinator



Adam Hicks
Director, Finance &
Strategic Operations



Brooklyn Coulson
Digital Impact Officer



Shauna Reiger
Manager of Finance



Lorna Sandberg
Director of Fund Impact



Karmyn Foreman
Community Investment
Officer



Abby Schneider
Impact Advisor



Victor Roman Morrow
Director of Impact



Trina Owens
Manager of Engagement



Karley Stangel
Engagement and
Events Officer



Jenna Peoples
Legacy Giving Advisor



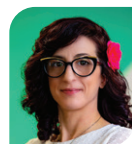
Jonah Toth
Manager of Community
Partnerships

Shared Services Team

This team is funded through a social enterprise cost-recovery model. The revenue that funds this team is from our shared services partners. This includes over 10 other community foundations across Canada.



Brooke Herbert
Fund Administrator



Rachel King
Finance Clerk



Kristie Patterson
Finance Clerk

2025 Student Team

The student team is largely funded through the Government of Canada's Summer Jobs Program. It is also funded by an anonymous donor who believes in the power of our youth.

- Rylie Bryden**
- Marc Eranista**
- Laurie Martin**
- Luke Schenher**
- Armaan Schgal**
- Max Seidler**
- Asutosh Thapa**
- Megyn Verbeek**

University of Regina Fall 2025 Interns

- Reilyn Pineda**
- Aobha Mac Loone**

2025-2026 Board

- Benson Thoudsanikone**
Chair
- Bula Ghosh**
Past Chair
- Femi Ogunrinde**
Vice Chair
- Jakaeden Frizzell**
Secretary
- Edmund Bellegarde**
Director
- Teresa Drew**
Director
- Rebeca Johnstone**
Director
- Grant Karst**
Director
- Andrea Klippenstine**
Director
- Rupen Pandya**
Director
- Deb Rush**
Director

A Message from Our Board Chair



Benson Thoudsanikone, Chair

It has been an honour for me to chair the board of directors over the past year. The Saskatchewan Community Foundation has seen incredible growth in that short period of time.

We have witnessed the Foundation's asset pool reach new heights. We now protect over \$170M in assets that help give back to the charitable sector sustainably each year. Due to the ambitious Community Foundation staff, we have also seen over 100 new funds be established in the past year. This is only possible due to the caring, welcoming, and inclusive work of Community Foundation staff. All of this growth means more people putting more resources back into the community. Our province can become safer, healthier, and more vibrant because of this.

Thank you to the Community Foundation's staff for their incredible work to connect community members directly to charitable causes. They found many ways to spark inspiration and a sense of hope this year. This includes connecting over 400 caring individuals to nearly 100 local charities at the Friendraiser event, raising over \$100K at the sold-out CommUNITY for Women event to support women and children in need, and "Family Tree" events where people who recently created their own funds can share with peers who have done the same. All of these examples help build a connected community.

I would also like to acknowledge the commitments of the Community Foundation's board of directors. Thank you for showing up and providing guidance to this pillar of our community, especially

to outgoing board members, Bula Ghosh and Teresa Drew.

Through her years on the board, Bula served as chair and on a variety of committees. Her passion and strong advocacy have been invaluable to this organization.

Teresa Drew brought her strategic mind to the board to help us succeed. Her vast experience with project management and volunteerism has been key to this board. She always has a grounded and analytical approach that helped us move forward.

And of course, thank you to all of the caring families, individuals, and organizations that have put trust into the Community Foundation. Your involvement is what keeps this place growing.

Benson Thoudsanikone,
Chair

A Message from Our CEO



Donna Ziegler, CEO

Here we grow. Not only the title of our report, but truly a summary of the direction of this past year. The Saskatchewan Community Foundation has seen immense growth and I'm so pleased to share with you what a remarkable year it was for not only us, but the donors, organizations, and communities we work with.

This is all made possible by our generous donors and partners. Thanks to you, we are able to bloom. While we're growing more than ever, we are deeply committed to the roots that our founders established nearly 60 years ago. It's because of those roots that we're able to flourish today.

As of 2026, over 300 funds are held at the Community Foundation by caring individuals, families, and organizations.

This is almost double the amount of funds held two years ago!

We are honoured to grant to recipients as far south as Estevan and all the way north to Stony Rapids. We are also providing administrative help for building projects, including the Esterhazy & District health facility, the Dodsland sports centre, and the Meadow Lake Co-op Centre.

Clearly, we're not only "south" any more.

This year we officially changed our name to the Saskatchewan Community Foundation. This name reflects our commitment to support Saskatchewan communities who do not have access to a local community foundation. It also ensures partnerships are possible right across our province – partnerships like SUMAInvest, which is already serving over 20 municipalities

across Saskatchewan since its launch last year.

We are one of seven community foundations in the province and we believe that all communities should be able to benefit from the community foundation model.

Thank you to our staff who have brought a welcoming, guiding, and hopeful approach to the community members we connect with. Thank you to our board and committee members for steering us in this direction. And thank you to all of you who are making a difference in our community through the Saskatchewan Community Foundation.

Donna Ziegler,
CEO

Impact by the Numbers

As of December 31, 2025, the Saskatchewan Community Foundation has...



\$160M+
in Assets Held

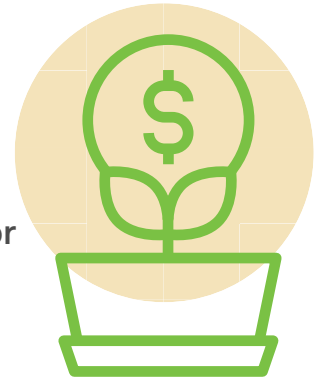
This represents all of the investments powering the Community Foundation and its stakeholders.

Facilitated
561 Grants
Supported
279 Grantees

Over \$7.3M was granted in 2025 to 279 grantees. This means charities have resources needed to deliver essential community programs. This helps the places we love thrive.

\$100M+
in Legacy Funds

This means sustainable funding for the charitable sector. It supports our communities, forever.



11
Staff Have Funds

Our team believes in the power of the Community Foundation first-hand.



Established
100+
New Funds

These are new relationships with people and organizations committed to making a positive community impact. It is a record growth of over 50% increase in funds held at the Foundation.

Year at a Glance

Connecting in Community



COMMUNITY FOR WOMEN EVENT SUPPORTS WOMEN AND CHILDREN IN NEED

Over \$100K raised at the CommUNITY for Women breakfast event in 2026 will provide over 50 women and children with essential needs to stay housed and safe.



THE 3RD ANNUAL FRIENDRAISER CREATES LONG-TERM COMMUNITY CONNECTIONS

Over 400 caring individuals attended the 2025 Friendraiser event, showcasing approximately 100 charities. The event builds relationships between charities and supporters. It also leads to collaboration amongst charities.



CHARITY PD DAY BRINGS THE COMMUNITY TOGETHER

On October 23, 2025, we held a Charity Professional Development Day full of education, impact, and community connections. This free day brought together charities to find new and innovative ways to work together.



SUMAINVEST PARTNERSHIP GROWS RESERVES FOR GROWING COMMUNITIES

The Saskatchewan Community Foundation and SUMA launched SUMAINvest - an easy and effective way to manage municipal reserves. SUMAINvest helps Saskatchewan municipalities harness the power of Saskatchewan Community Foundation's pooled investment portfolio and helps municipalities diversify investments.



FARMLAND DONATIONS PROVIDE A NEW WAY TO GIVE BACK

In partnership with Farmland Legacies, the Community Foundation is beginning to accept farmland donations. This means caring farm owners can turn their land into a lasting legacy of generosity. They can support the causes and communities they care about long after their lifetime.



SOCIAL IMPACT INVESTMENTS MEANS MORE IMPACT RIGHT HERE IN SASKATCHEWAN

We are moving \$20 million to support entrepreneurs and businesses in this province through Investments with Impact. This is about moving money to make a direct difference in Saskatchewan. We're happy to say that we are investing with Conexus Venture Capital, PFM Capital Inc., Westcap, and others.

3RD ANNUAL STATE OF THE FOUNDATION

During our 3rd Annual State of the Foundation event on February 26, 2026, we took a look at the highlights from the past year including successful events, our new name change, new initiatives, and investment results.

Scan the QR code to watch the full video presentation:



Turning the Page Together: 3rd Annual CommUNITY for Women Breakfast

On February 3, 2026, the Saskatchewan Community Foundation hosted our third annual CommUNITY for Women breakfast fundraiser. This SOLD-OUT event celebrated women who inspire change and shared powerful stories.

Because of your generosity, this year's event was a tremendous success. Collectively, we raised over \$100K. This will directly support women and children in our community through the Emergent Women and Children's Fund. Thank you to everyone who came out to this wonderful event, and to those who have supported the Emergent Women and Children's Fund. We are so grateful that you were a part of this annual breakfast event.

We would also like to extend a huge thank-you to all of the passionate individuals who spoke, performed, and shared their stories during this event: Sage Lacerte, Melissa Coomber-Bendtsen, Donna Ziegler, the Globe Theatre, Arianna and Jaydee, Dara Schindelka, and Karla Tholl. We are honoured to have been touched by your passion, strength, and inspiration.

Events like this wouldn't be possible without our incredible sponsors and supporters. Thanks to our Page Sponsors: Capital Automotive Group, BMO, Casino Regina, KPMG and McKercher LLP, PearTree, PFM Capital, DCG Philanthropic Services Inc., and Miller Thomson.

We would also like to acknowledge our Bookmark Sponsors: Westridge Construction, TD Global Investment Solutions, 1080 Architecture Planning + Interiors, and Global Philanthropic Canada.

We are also grateful for the amazing support from the PrairieAction Foundation. Thank you to the Status of Women Office and the Government of Saskatchewan for providing funding to support the Emergent Women and Children's Fund and your ongoing commitment to support women and girls to live safer, healthier lives.



Photos captured by Moments By My Photography

Stories from the *Emergent Women and Children's Fund*

The Emergent Women and Children's Fund provides direct resources and essential needs to women and children who face a variety of significant challenges. Women and their families who flee from abusive relationships and unsafe homes often encounter difficulties relating to housing, food, mental health, and economic uncertainties which can compound an already devastating situation. This immediate support can be life saving, keeping women and their families housed, safe, and secure.

This fund provides up to \$2,000 to women and children facing urgent need. No barriers. No questions asked. Just help when it's needed most.

ASHLEE'S STORY

Ashlee is a devoted mother of five who has always worked hard to give her children a safe and loving home. But after the birth of her youngest child, life became overwhelming. Without access to childcare benefits and still recovering from childbirth, Ashlee found herself falling behind on rent and utility bills. She was doing everything she could, but it wasn't enough. With the power company threatening to shut off her electricity, she began to feel like her hard work had been for nothing.

Ashlee described feeling lost and hopeless as the weight of unpaid bills loomed over her. That changed when she received \$1,444 through the Emergent Women and Children's Fund. The support made an immediate difference; she was able to pay her rent and keep the lights on. More than just financial relief, it brought her peace of mind, dignity, and a renewed sense of stability.

Thanks to this support, Ashlee now feels safer, more connected to community resources, and

confident in her ability to care for her children. What once felt like an impossible burden has turned into a path forward. "I'll never forget what this support did for us," she shared. "It gave me hope."

DESTINEE'S STORY

I'll never forget the day the power was shut off. My two-year-old son and I sat in the dark, and all I could think was, "how did it come to this?" I had no money left to pay the bill, and rent was due in just a few days. Then the eviction notice came. I felt completely helpless. I tried to stay strong for my son, but the fear of losing our home was overwhelming. It felt like everything was slipping away—our safety, our routine, our stability.

That's when my support worker told me about the Emergent Women and Children's Fund. I applied, not knowing what would happen, but it gave me a glimmer of hope. When I found out I had been approved for \$2,000 to help cover my rent and utilities, I cried. Real, gut-deep relief. This support changed everything.

I was able to turn the power back on, pay our rent, and most importantly, breathe again. I didn't have to choose between keeping a roof over our heads and feeding my child.

This funding didn't just keep us housed—it gave me something I hadn't felt in a long time: confidence. I feel safer. More secure. I can focus on caring for my son instead of constantly worrying about survival. It reminded me that I'm not alone, and that better days are possible. I don't know where we'd be without this support. All I know is now, when my son wakes up, he wakes up warm, in his own bed, with a mom who believes we'll be okay.

**SUPPORT THE
EMERGENT WOMEN
AND CHILDREN'S
FUND TODAY**





Charity PD Day *Fosters Collaboration*

Thank you to everyone who joined us for the Charity PD Day. It was a day full of connection, learning, and inspiration!

On October 23, 2025, we held a Charity Professional Development Day to bring together charities to learn and grow, together. This free event kicked off with an energetic keynote from Jeph Maystruck (Strategy Lab Marketing) focusing on innovation in the local charitable sector. Breakout sessions throughout the day offered opportunities to learn about engaging the media from Sabeen Ahmad (CTV), telling your financial story with Sheila Filion (Virtus Group), undertaking successful fundraising campaigns with Lisa Smith (DCG Philanthropic Services), technology

and efficiencies with Bev Betteridge (The Corner Office), as well as presentations from the Community Foundation.

A panel discussion hosted by Colleen Strauch (Luther College, Nonprofit & Voluntary Sector Studies Network) explored meaningful youth engagement with Max Seidler, Shiza Hirani, and Jun Gan.

Thank you to Mayor of Regina, Chad Bachynski, for closing out the event with a fireside conversation about the impact of our local charitable sector.



“I’ve been to so many professional development courses outside of this province and it’s so nice to have a day for charities to gather locally.”

Dana Haukaas, Executive Director of Moose Jaw Humane Society



“Very much enjoyed the day. Great sessions and a wonderful opportunity for networking with other non-profits. Thank you Saskatchewan Community Foundation for bringing our community together.”

Lin Gennutt, Executive Director of Regina Food for Learning





Launch of the Charity Resource Hub

Making it easier for Saskatchewan non-profit organizations to find local support and information.

FROM CONCEPT TO REALITY: HOW THE CHARITY RESOURCE HUB WAS BUILT THROUGH COLLABORATION

The *Charity Resource Hub* is a project from the Saskatchewan Community Foundation designed to better support charities across the province. It was led and built by our Digital Impact Officer, Brooklyn Coulson. Many organizations in the non-profit sector operate with small teams and limited resources, making it difficult to find reliable, local information to help with day-to-day operations. After hearing directly from charities about this challenge, the Community Foundation sought to create an easy-to-use online hub where organizations can find trustworthy, Saskatchewan-relevant resources all in one place. This includes helpful tools, training materials, information on grants, and recordings of learning opportunities. The goal is to make it easier for charities to access the support they need—saving them time and helping them make a bigger impact in their communities.

The Community Foundation partnered with the University of Regina’s Faculty of Engineering and Applied Science to explore the website designs for the Charity Resource Hub. The Community Foundation acknowledges Dr. Tim Maciag for involving his class, the ENSE 271 – People-Centred Design class. They spent nearly four months engaged with the resource needs of the charitable sector. The class was tasked to explore different ways resources could be organized, filtered, and displayed within a digital space. As a result of this partnership, the Community Foundation was inspired by the students’ work, and was able to develop the final version of the Charity Resource Hub.



“Supporting charities strengthens society as a whole. The students’ work doesn’t just build a website; it empowers organizations to do more for the people they serve.”

Dr. Timothy Maciag, Assistant Professor, Software Systems Engineering, University of Regina

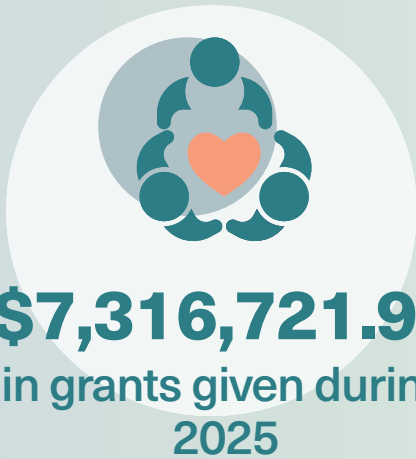


“We were going to work on something that actually mattered, something that would help charities across Saskatchewan. It wasn’t just a class assignment; it was real life.”

Tom Goncin, Third-year Software Systems Engineering Student at the University of Regina

Thank you to all of you who make our *community stronger.*

Thank you to all the changemakers who make a difference by fueling the charitable sector. You help charities achieve missions that support those in need and make our homes vibrant places to be.



THE BILL AND HELEN DAVIDSON FUND SUPPORTS ENVISION COUNSELLING DURING WILDFIRES

Envision Counselling and Support Centre reached out to the Community Foundation when wildfires were raging in the province. Weyburn was hosting a number of evacuees and they needed Envision's counselling services to help. The organization needed additional funding to provide the support needed. The Bill and Helen Davidson Fund provided a grant of \$2,000 that allowed Envision to provide these services without dipping into emergency funding.

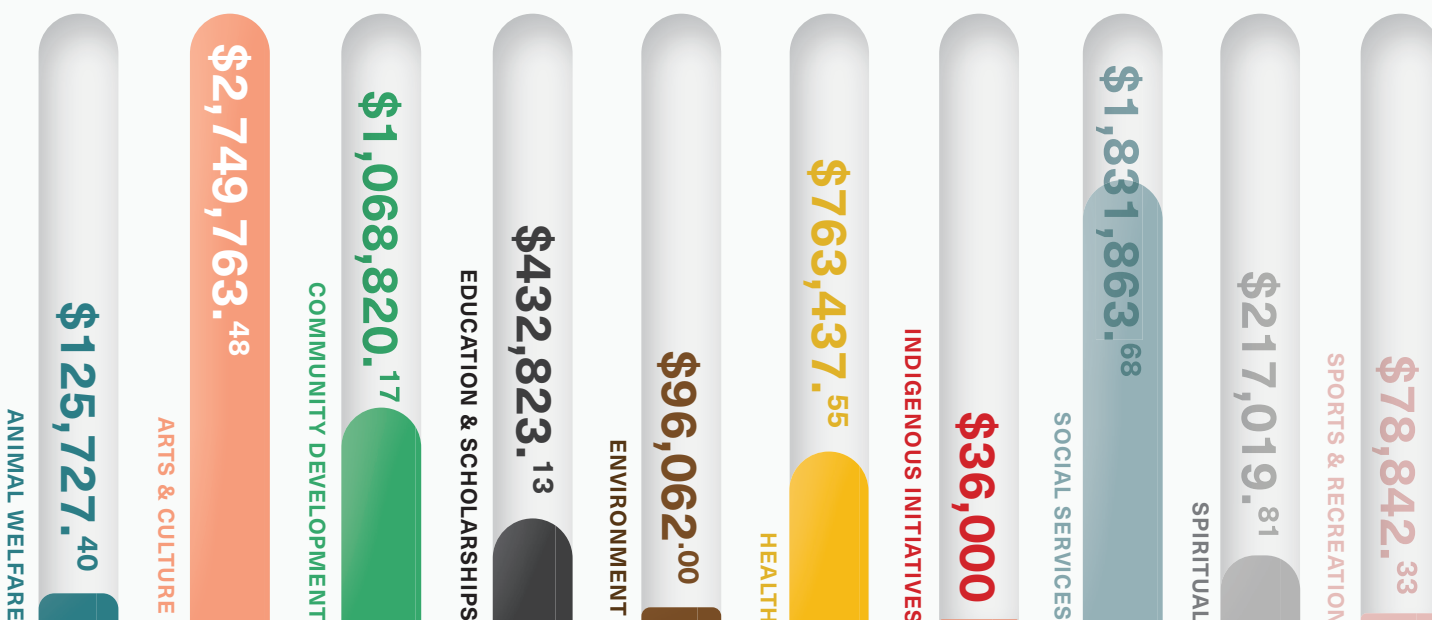
THE MOFFAT FAMILY FUND GIVES TO SQUARE ONE COMMUNITY'S SUPPORTIVE HOUSING PROJECT IN MOOSE JAW

Square One Community provides supportive housing to individuals aged 18 and over who have been experiencing chronic homelessness or housing insecurity. It helps them gain and maintain independent living in the community. The Moffat Family Fund granted \$17,800 to help their mission succeed and transform the lives of those in need.

Quote from participant:

"Here I get more support than anywhere else I have worked with. I know I can get my life together with you guys with me."

2025 Granting: Impactful Investments Into the Community



A LANDMARK GIFT ESTABLISHES THE MORRISSEAU LEGACY FUND - PROMOTING THE WORK AND LIFE OF NORVAL MORRISSEAU THROUGH THE MACKENZIE ART GALLERY

The Saskatchewan Community Foundation is proud to steward the Morrisseau Legacy Fund, made possible by a significantly generous gift from the Westerkirk Foundation. This endowed fund will support the Morrisseau Storyline Project, a national initiative led by the MacKenzie Art Gallery to protect and celebrate the work of Norval Morrisseau, one of Canada's most powerful Indigenous voices in art.

As stewards, the Community Foundation manages the fund, distributes yearly support, and works with an advisory group representing the Westerkirk Foundation, the Mackenzie Art Gallery, and the Norval Morrisseau Heritage Society.

This gift strengthens reconciliation efforts and ensures the project will last for generations. It supports research, exhibitions, and learning tools. These include a bilingual digital platform, a searchable database of over 3,000 artworks, Anishinaabemowin language resources, and national programs for communities.

Morrisseau's legacy lives on. It teaches, inspires, and honours his deep impact across Canada.

Tom Webb Leaving His Legacy to Pangman, Saskatchewan



Tom Webb is a new fundholder at the Community Foundation from Pangman, Saskatchewan. He heard about the Community Foundation when he saw television ads air during daytime news. One ad features the story of the Gravelbourg Co-Cathedral Fund – a fund that supports the infrastructure of Gravelbourg’s most precious gathering place to sustain it long into the future. This story resonated with Tom as he realized how a community foundation can be a powerful tool to support his own home.

At the age of 97, Tom decided to create the Tom & Julia Webb Community Fund, named after himself and his late wife. The Fund will support the town of Pangman during his life. It will be enhanced by a generous gift left in his Will that will add support after his passing.

“Well it’s a friendly town, everybody knows everybody, and you can trust everybody. I just wanted to help out

people. I never had any kids of my own so I have nothing left to do with what I accomplished, so I might as well help out other people... In my Will I’m leaving so much for each nephew or niece, and the rest to help other people. I think that you should leave a mark when you go. Not just take everything with you and leave nothing behind... To me it’s just the proper thing to do.”

Tom has lived an incredibly thoughtful life where community preservation has always been his focus. He has owned Redcoat Ag in Pangman and is a former owner of the Weyburn Red Wings hockey team. Two endeavours that had heart at the centre of it all.

He grew up in a small town called Amulet, but that community has

faded from existence. When he bought Redcoat Ag at the age of 90, it was a decision made to do his part in preserving the community of Pangman.

In 1999, he bought a shortline railroad connecting Pangman and Assiniboia, SK, putting it into community ownership. Red Coat Road and Rail is now overseen by local representatives along the rail line. If he hadn’t spearheaded this effort, the line would have ceased to exist and impacted all communities bordering it.

Similarly, in the 1980s, Tom helped grow and sustain the Weyburn Red Wings hockey team. He was involved with the team for 11 years, which included taking over full ownership of the team for seven years. Tom’s involvement, including financial backing, helped save the team’s existence at a time of great need. When Tom wrapped up his time with the team, he sold it to the community of Weyburn, making it a community-owned organization.

At every turn, Tom has found a way to give back and strengthen the communities he loves. It is an absolute privilege to help Tom leave his legacy through the Community Foundation. He can keep doing what he has done his entire life, even after he is gone – taking care of community.



Watch Tom’s video!

3rd Annual Friendraiser Sparks Community Connection

400+ GUESTS CONNECT WITH NEARLY 100 CHARITIES

On August 14, 2025, we hosted our 3rd annual Friendraiser event at the Conexus Arts Centre in Regina. There were nearly 100 charities in attendance and over 400 board members, partners, charity members, and friends that lit up the room sparking conversations and a sense of community.

Out of the nearly 100 charities featured at the event, 42 attended for the first time! Charities and guests shared stories of impact

and connected over their passion for community, but this was also a great opportunity for charities to make connections with each other. A charity representative shared, "After chatting with a newer non-profit, my organization is going to help elevate their voice and expand their reach on our social platforms, and my organization will in turn also reach a new audience. A small act, but potentially huge return. Community helping community – win-win!"

After the event, Rod Donison from GSD Strategies shared his

experience of this illuminating event stating, "I thoroughly enjoyed attending today's Friendraiser that was brilliantly put on by the Community Foundation. I loved seeing how the Foundation helps organizations 'spark change so we all shine brighter' by supporting our charitable and non-profit sector in Saskatchewan."



Watch a video recap of the event.

Congratulations to North Central Family Centre for winning the Vital Community Award and to the Barber family for winning the Lasting Legacy Award at the event. Everything they do to foster a brighter community is worth celebrating.

The Community Foundation would like to highlight all of the amazing Friendraiser sponsors. Without their dedication, this event would not have been possible. Thank you to our sponsors:

Spotlight Sponsors:

- Affinity Credit Union
- Impact Printers
- PFM Capital Inc.
- Casino Regina
- DCG Philanthropic Services Inc.
- Virtus Group
- PearTree

Candle Sponsors:

- Capital Automotive Group
- Special Event Rentals
- CIBC Private Wealth
- Campbell Haliburton Group
- Saskatchewan Blue Cross

Spark Sponsors:

- MicroAge
- Painting by Jen Fong
- Moments by My Photography



SAVE THE DATE: FRIENDRAISER 2026 - AUGUST 13 @ CONEXUS ARTS CENTRE



Planting Seeds

On AccessNow TV

We are connecting viewers to the donors and charities making an impact across the province.



Planting Seeds: Philanthropy in Saskatchewan season three aired in 2025. It is a collection of 12 intimate conversations with Saskatchewan changemakers. Learn from the heartfelt stories of charities and donors making and impact.

Watch Season Three online at www.SaskFoundation.ca/plantingseeds/

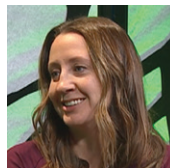


Season Three Episodes:



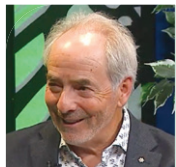
Episode 01:

What's Happening at the Community Foundation with Donna Ziegler



Episode 07:

First Steps Wellness Centre's Unique Spinal Cord Injury and Neurorehabilitation Services



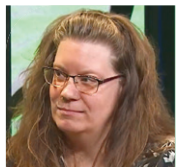
Episode 02:

Giving and Volunteering Insights with Mo Bundon



Episode 08:

Helping Those with Autism Reach Their Potential with Autism Resource Centre



Episode 03:

Envision Counselling & Support Centre Helping Individuals Overcome Challenges



Episode 09:

Rainbow Youth Centre Inspires Youth to Lead Stronger Lives



Episode 04:

Regina Food for Learning Nourishing Children in Schools



Episode 10:

Access Communications Children's Fund with Adriana Garcia and Tom Boyko



Episode 05:

Strategic Thinking in the Non-Profit Sector with Cody Sharpe and Vanessa Amy of Non-Profit Governance Solutions



Episode 11:

The Intersections of Community and Charity with Victoria Flores from Regina Open Door Society



Episode 06:

South Saskatchewan Independent Living Centre Empowering People with Disabilities



Episode 12:

Vital Conversations of Community Need with Colleen Strauch from the Luther College NVSSN

Turning Farmland into a Lasting Legacy of Generosity

A new way for farmers to leave an impact that will continue generations to come



This helps to ensure strong and sustainable management, support young farmers, and continue to use the proceeds from the land to support charities and causes throughout the province.

Merv Hepting has made a commitment to donate his farmland. We truly thank Merv for putting his trust in the Community Foundation and pouring his heart into the province.

always generous. I want to see that spirit of generosity continue. I can trust the Community Foundation to accept those funds and grow them. I can trust that they'll keep them safe. And I can trust that they'll honour the intent for which those funds were given. These are large decisions. This is probably the biggest decision that you'll ever make. Now is the time to make it count and have it make an impact forever."

Merv Hepting, Fundholder and Farmland Donor

In partnership with Farmland Legacies, we are leading the charge across Canada and are proud to be the first community foundation in Canada to be able to process farmland donations with a lifetime beneficiary option. This is a way to donate agricultural land, keep the land intact, and be responsible stewards of the land.

"It's not just money. It's where the heart is. My grandparents on one side lost their farm during the 1930s. My grandparents on the other side were faced with the challenge of destroying their cattle herd in order to get money from the government to survive. My parents have worked very hard to establish their farm. They were never rich, but they were

Watch Merv's full story at www.SaskFoundation.ca/Farmland



Learn more about donating farmland.

Three Ways to Donate Farmland

Outright Gift of Farmland

- Full donation now with a tax receipt for fair market value.
- Best done when selling other land or assets — it can help offset capital gains taxes.
- A Deed of Gift protects your wishes.
- Land is rented (with the help of Farmland Legacies) and income goes to the charitable causes of your choice.

Add Us to the Title (Retain Use for Life)

- You keep full control — we act as a silent partner.
- A dormant Deed of Gift is in place until your passing.
- You continue all rental and management decisions.
- After your passing, the land transfers to us, and your estate receives a full tax receipt.

Lifetime Beneficiary Options

- A flexible trust alternative without the complexity.
- Transfer the land to us and receive a full-value tax receipt right away.
- You retain control of rental income and decisions for life.
- Upon your passing, the Community Foundation continues to protect your agricultural legacy.

Partnering with Charities for a Stronger Future

Over 40 charities now partner with the Community Foundation for sustainability.



A community foundation is more than a place for charities to receive grant funding. Many charities actually hold their own funds with us. This ranges from Legacy Funds for long-term stable funding, No-Fee Funds to facilitate everyday donations with no administrative fees, Charitable Assets Under Administration to benefit through pooled reserve investment, and more.

MUNCH CAFE AND CATERING'S STORY

Munch Cafe and Catering is a non-profit that exists to train and employ people with cognitive disabilities.

"I have 12 employees. Eleven of them have cognitive disabilities. A lot of our team members haven't been treated very well. They've been bullied in school. They've been told they're not capable of things. They've been told they're

not as good as other people. That they're less than — and they're not. They're just different. Everyone is different. When given a chance to work in a supportive place and be given real roles, just watch them flourish. It's like watching a flower open...

"We have three funds at the Foundation. The capital fund was established to help raise money to pay for the costs of setting up a restaurant. The operating fund is because we run with more staff than our competitors would. We need more support than our competitors would so we need an extra source of money in order to keep our pricing competitive. The third fund, Charitable Assets Under Administration, is where the reserves got deposited. We did that for a couple reasons. One is that the interest rate that we're getting there is a lot better than we were getting from the GICs we were with previously. But the other reason is because we're opening the restaurant and we didn't know if we need the money for buying more equipment or for operations. With that fund you're able to take the money out if you need it.

"I like the idea that our money is being held by an institution that's doing good things in the community. They're just really good people. The people I've met are really good people and they're reliable, professional, and responsive. The things they say happen when they say they're

going to happen. And I feel like they're really interested in our organization and believe in what we're doing... They honestly care about people and they honestly do what they can to help you succeed."

"When people come to Munch and they taste our food, they see who made it, and they see who served it - let's talk about disability now."

Rick Morrell, Executive Director at Munch Cafe and Catering



Watch the full video story.

Over 40 charities have funds at the Community Foundation!

SUMAINvest Helps Municipalities Across Saskatchewan

A new opportunity to diversify your municipal reserve investments



Malcolm Eaton, Former Mayor of Humboldt

SUMAINvest is a collaboration between the Saskatchewan Urban Municipalities Association (SUMA) and the Saskatchewan Community Foundation. Its goal is to strengthen the financial capacity of municipalities through pooled reserve investment. This project is one of the first initiatives undertaken under the "Saskatchewan Community Foundation" name and directly addresses a key focus of our 2019 Vital Signs report to sustain rural communities.

The program leverages the diversified and professionally-managed investment portfolio of the Saskatchewan Community Foundation to help municipalities diversify investments.

SUMAINvest launched in mid-April 2025. Since then, over 20 municipalities have put their trust into SUMAINvest with a total of over \$2.6M invested.



EFFECTIVE RESERVE MANAGEMENT IS KEY TO STRONG MUNICIPAL FINANCES

As the former mayor of Humboldt, Malcolm Eaton encourages municipal leaders to learn about best practices for governance and financial management. Drawing on his own experience as a member of council and his work with municipalities, he recognizes the importance of effective reserve management to help stretch municipal dollars.

"The aspirations we all have for the future of our communities must be based on financial plans that support our long-term goals and vision. SUMAINvest provides a vehicle to help councils make financial planning decisions that can have a real impact."



Learn more at www.SUMAINvest.ca

Honouring Those We Lost: *In Memoriam*



CLAIRE KRAMER (1926 - 2025)

We honour the life and legacy of Claire Kramer, a gracious, charitable and humble woman of vision and kindness. Claire's family was always her first priority, but she also cared deeply for community and transformed thousands of lives by giving her time, talents, treasures, and ties. She served on the Community Foundation Board for over 20 years as Chair, Vice Chair, and Honorary Advisor. Her generosity prioritized funding to such initiatives as: school reading programs, music programs, arts and culture initiatives, creating and supporting renowned book awards, nursing scholarships, women and children programs, nutrition and food security programs, and so much more. Her endless dedication, unpretentious, and genuine personality was infectious and loving. Her kindness has given others hope, sustainability, and opened new opportunities for a better future.

Claire, along with her husband, Don, were deeply connected to the Community Foundation and created the Donald and Claire Kramer Foundation Fund.



Through this fund, their grants made over the last 35 years have made a significant difference in the community. Claire & Don's ties and trust in community equated to more than 10 additional families and organizations joining the Foundation who have philanthropic goals of making more impact in community.

Their love for Saskatchewan, their generosity, and their connections will continue to be remembered forever.

We extend our heartfelt condolences to the Kramer family and all who were moved by Claire's incredible presence.



**GEORGE BUTT
(1929 - 2025)**

In 2008, George Butt created a Legacy Fund to benefit his hometown of Arcola for generations to come. Each year, the George Butt Foundation Fund provides support to Prairie Place Hall, Arcola Curling Club, St. Andrews United Church, and Arcola Cemetery. In 2025, George passed away peacefully at the age of 96 years.



**DR. BRYAN HILLIS
(1956 - 2025)**

Dr. Hillis was a respected academic leader who shaped our community. Previously serving as President of Luther College at the University of Regina, he was known for his kindness.

Along with his wife, Joanne, he was the fundholder of the Joanne and Bryan Hillis Funds held at the Community Foundation. Our hearts are with Joanne and their loved ones. Dr. Hillis passed away peacefully on May 23, 2025 at the age of 68 years old.



**LYN GOLDMAN
(1932 - 2026)**

Lyn Goldman truly had a heart of gold. She had a bright and unforgettable personality and was known by many for her efforts to empower women and support the arts. Days before her passing, she launched the \$50,000 ongoing Thorn Prize for artists, in honour of her late brother Anthony.

Lyn established the Lyn Goldman Charitable Trust Fund and the Lyn Goldman Legacy Fund held at the Community Foundation. It is a beautiful way that her legacy will support the causes she loved.



**JOHN COFLIN
(1949 - 2026)**

John and his wife, Joanne Skidmore, established the Coflin Skidmore Community Fund in 2025 at the Community Foundation. John and Joanne were born in Saskatchewan and raised by families who believed in the importance of supporting their communities through connecting to a variety of non-profit organizations. John's work was in supporting the families of people with intellectual disabilities. John died at the age of 76 on January 20, 2026. We send our deepest condolences to John and Joanne's relatives and friends.

Join our Legacy Circle

Be a part of a group that is united by a shared passion for community impact.

Donors who commit to leaving a deferred gift to the Community Foundation, such as through a Will or a life insurance policy, are invited to be a part of our Legacy Circle.

It's a way for the Saskatchewan Community Foundation to show our gratitude for your generosity with exclusive events, personalized engagement, and special recognition as you create your legacy. This includes our Legacy Circle gatherings where people can meet other donors and talk about the causes and communities close to their hearts.

“As I have been working on my Will, I had a dilemma. Since I have no immediate family I didn’t have a logical family beneficiary. My thoughts turned to charities. Which charities? And I wanted the gifts to last into the future.

My legacy fund at the Community Foundation answered all of my questions. Now I can support the Vital Signs charities long into the future.”

Robert Perry,
Fundholder and Legacy Circle Member



Contact us at legacy@saskfoundation.ca to start a conversation about making a planned gift through the Saskatchewan Community Foundation.

Highlights From National Philanthropy Day

The Association of Fundraising Professionals - South Saskatchewan Chapter celebrates National Philanthropy Day. The contributions of donors and volunteers are recognized during November each year.

The Saskatchewan Community Foundation was proud to be a 2025 Community Sponsor. We are always excited to highlight those who make a difference in our community through this event. We would like to take a moment to recognize some of the National Philanthropy Day recipients who have ties to the Community Foundation.

OUTSTANDING PHILANTHROPIST

Drs. Don and Renu Kapoor

Nominated by University of Regina's Philanthropy Department



The Drs. Don and Renu Kapoor Legacy Fund held at the Saskatchewan Community Foundation uplifts programs of established grassroots charities in Regina that advance equity, celebrate culture, and create opportunities for more inclusive and connected communities. Renu also served as a board member to our foundation for six years.

OUTSTANDING COMMUNITY GROUP

Saskatchewan Roughrider Foundation

Nominated by Ronald McDonald House Saskatchewan



The Saskatchewan Roughrider Foundation Funds have been held at the community foundation for over five years.

OUTSTANDING LEGACY PHILANTHROPIST

Bill and Helen Davidson

Nominated by Saskatchewan Community Foundation



The Bill and Helen Davidson Fund started in 2008 and is held at the Community Foundation. It is a strong example of community impact in Saskatchewan, particularly Weyburn. Bill and Helen Davidson were pillars of the Weyburn community.

OUTSTANDING LEGACY PHILANTHROPIST

Ritenburg Family Foundation Fund

Nominated by Saskatchewan Community Foundation



Since 2013, the Ritenburg Family Foundation Fund, established through an estate gift from Lorne and Isabel Ritenburg, has helped break down financial barriers for engineering students, supported those studying Social Work, and provided funding for the Vital Community Fund at the Community Foundation.

OUTSTANDING YOUTH PHILANTHROPIST

Max Seidler

Nominated by Paul J. Hill School of Business



Max exemplifies what it means to be an outstanding student and community leader. His dedication as VP Finance of the Hill Business Students' Society, involvement with Hill JDC West, and record-breaking volunteer hours showcase his remarkable commitment to community. Max's expertise in event planning, marketing, and public speaking, paired with his impressive volunteer record of 579 hours in six months, demonstrates exceptional work ethic and passion for helping others. Max served as a summer student at the Community Foundation in 2025.



National Philanthropy Day®



Fund Appreciation Wall

We recognize those who are making an impact, forever.

The Saskatchewan Community Foundation facilitates partnerships to enrich the quality of our communities. We are grateful for those who have put their trust in the Community Foundation. We aim to ensure that communities feel the impact, forever. We would like to recognize every family, organization, and community that holds a fund with us. We look forward to the impact these funds will make for generations to come. Together, we have the power to create a community that thrives, leaving no one behind.

(All funds as of March 31, 2026)

FUNDS CELEBRATING MILESTONES IN 2026

5 YEARS:

- Dayna Brons Entrance Scholarship Fund
- Glengarry Book Award Fund
- Joanne and Bryan Hillis Funds (2)
- Verma Shore Hooper Funds (2)

10 YEARS:

- DoubleUp Opportunities Fund
- Joyce Gemmell Jessen Habitat Conservation Fund
- Nell Holowachuk Fund
- Regina Work Preparation Centre Fund

15 YEARS:

- Canadian Red Cross Society - Saskatchewan Endowment Fund
- National Theatre School (NTS) Theatre and Community Engagement Fund

20 YEARS:

- Cedar Hill Cemetery Trust Fund
- Helen and Gerard Shearer Foundation Fund
- Lloyd and Duna Barber Family Foundation Fund

25 YEARS:

- 22nd Century Club Fund
- Lyn Goldman Charitable Trust Fund
- Mary and Vern Fowke Fund
- Maynard and Ida Gray Fund
- Moffat Family Fund
- South Shore Community Foundation Fund

30 YEARS:

- Genevieve and Murray Grant Fund
- Kramer Operating Trust Fund
- Whitespruce Fund

35 YEARS:

- Constance M. Acton Fund
- Kramer Science Fund

55 YEARS:

- John Patton Trust Fund

- 100 Men Who Care Regina Fund
- 22nd Century Club Fund
- Albert Park Community Association Legacy Fund
- Amrit Mavi Fund
- Anne Luke Legacy Fund
- Anonymous Donor Fund (12)
- Archer Family Giving Fund
- Arlene C. Janzen Memorial Fund
- Art Gallery of Regina Legacy Fund
- Artesian Performing Arts Funds (2)
- Autism Resource Centre Funds (2)
- Barbara and Douglas Mader Funds (2)
- Big Sky Centre for Learning and Being Astonished! Funds (2)
- Bob and Helen Magel Legacy Fund
- Boston Pizza Saskatchewan Fund
- Brad Hornung Legacy Fund
- Braydon Bretzer Memorial Fund
- Broncs Football Legacy Fund
- By Fire And Water SK Fund
- Canadian Red Cross Society – Saskatchewan Endowment Fund
- Carla Harris Accessible Arts & Culture Fund
- Caron & Masney Family Legacy Fund
- Catalyst Community Fund
- Cedar Hill Cemetery Trust Fund
- Chad Pottle Memorial Fund
- CKCK-TV Trust Fund
- Clark and Anne Lewis Charitable Fund
- Climate Action Fund
- Coflin Skidmore Community Fund
- Constance M. Acton Fund
- Courtney Memorial Fund
- Co-op Community Builder Campaign Fund
- Creative Options Regina Impact Fund
- Cultural Connections Regina Legacy Fund
- DAM Kind Legacy Fund
- Danielle Munson Memorial Scholarship Fund
- Dayna Brons Entrance Scholarship Fund
- Derril McLeod Family Foundation Fund
- Desirée Hutton (née Steele) Legacy Fund
- Diana and Brian Schwab Giving Fund
- Dodsland Sport Center Fund
- Donald and Claire Kramer Foundation Funds (2)
- Donavon Puttick Memorial Scholarship Funds (2)
- Doris & Bill Downie Memorial Fund
- Doris and Clarence Taylor Foundation Fund
- Dorothy Wilson Scholarship Fund
- DoubleUp Opportunities Fund
- Doug and Celia Johnson Foundation Fund
- Doug Barber Memorial Fund
- Doug Cannon Memorial Trades Scholarship Fund
- Dr. Colin Toffan and Dr. Sunita Toffan Legacy Fund
- Dr. Femi Ogunrinde Educational Opportunity Fund
- Drs. Lewis and Elisabeth Brandt Trust Fund
- Drs. Don and Renu Kapoor Legacy Fund
- Duke of Edinburgh's Award, Saskatchewan Division Fund
- Dylan Morin Inclusive Employment Fund
- E and J Roszell Children, Youth, and Families Legacy Fund
- Ed & Marg Tiefenbach Fund
- Ehrmantraut Foundation Fund
- Emergency Response Fund for Community Needs
- Emergent Women and Children's Funds (2)
- Ena and John Houston Trust Fund
- Esterhazy & District Health Care Fund
- Federation for the Blind Trust Fund
- FeRuRoJo Veloso Health Foundation Fund
- FeRuRoJo Veloso Medical Foundation Fund
- First Steps Wellness Centre Funds (2)
- Folk Family Fund
- Fred and Margaret Greenough Fund
- Fridays for Future Youth Empowerment Fund

- Friends of the MacKenzie Acquisition Fund
- Gary Hyland ALS Fund
- Gary Hyland Literary Scholarship Fund
- Genevieve and Murray Grant Trust Fund
- George Butt Foundation Fund
- Gerald B. Wilson Scholarship Fund
- Gerry and Marion Powers Fund
- Give with Joy Fund
- Give with Meaning – FLR Fund
- Glengarry Book Award Fund
- Globe Theatre Society Funds (2)
- Granger Legacy Fund
- Gravelbourg Co-Cathedral Preservation Funds /Fonds pour la préservation de la Co-Cathédrale (2)
- Greg and Dianne Swanson Legacy Fund
- G & S Karst Family Foundation Fund
- G. Murray and Edna Forbes Foundation Fund
- Hannah's Hope for Healing Legacy Fund
- Harald Liebe Scholarship Fund
- Heavisides Family Foundation Fund
- Helen and Gerard Shearer Foundation Fund
- Hicks Family Education Fund
- Hnidy Macdonald Cultural Fund
- Honourable Randy Weekes Strengthening of Parliamentary Democracy Funds (2)
- HVAC Sales & Service Legacy Fund
- Jackle-Schneider Family Fund
- Jamieson Family Legacy Funds (2)
- Janet and Steven Warren Magel Legacy Fund
- Jay and Christy Stockdale Family Fund
- Jay Stockdale Family Foundation Fund
- Jesutofunmi Alabi Impact Fund
- Jim Rose Memorial Fund
- Joanne and Bryan Hillis Funds (2)
- John Patton Trust Fund
- Joyce Gemmell Jessen Habitat Conservation Fund
- Karius Family Fund
- Kathleen Wilson Scholarship Fund
- Keith Brunskill Legacy Scholarship Fund
- Ken Smith and Rachelle Mondor Smith Family Fund
- Kevin Tell Legacy Fund
- Kramer Ltd. Foundation Fund
- Kramer Operating Trust Fund
- Kramer Science Fund
- Kruzeniski Legacy Fund
- Larry Wilson Fund
- Lawrence Wilson Scholarship Fund
- Leader-Post Foundation Legacy Fund
- Leo and Sandra Verhelst Family Funds (2)
- Listen to Dis' Funds (2)
- Lloyd and Duna Barber Family Foundation Fund
- Lorne & Evelyn Johnson Funds (2)
- Lorne & Evelyn Johnson RSO Legacy Fund
- Loretta J. Ring – Aspire Funds (2)
- Lyn Goldman Charitable Trust Fund
- Lyn Goldman Legacy Fund
- Lynn and Jim Tomkins Foundation Fund
- MacKenzie Facilities Legacy Fund
- Mallory "Bell" Bjella Legacy Scholarship
- Mann Family Trust Fund
- Marian Gardens Charitable Fund
- Marlene Schneider Memorial Fund
- Marlene Wilson Scholarship Fund
- Mary and Vern Fowke Fund
- Matthew 6:21 Fund
- Maynard and Ida Gray Fund
- McCreary Hanley Family Fund
- McLellan Family Funds (2)
- McNair Family Foundation Funds (2)
- Millenium Fund
- Miller Thomson Fund
- MNP Community Fund
- Mobile Crisis Services Funds (2)
- Moffat Family Fund
- Moose Jaw Humane Society Capital Campaign Fund
- Moosomin and District Music Festival Endowment Fund
- Moser Family Funds (2)
- Mr. and Mrs. Jack Ambler Trust Fund
- Munch Cafe and Catering Funds (2)
- National Theatre School (NTS) Theatre and Community Engagement Fund
- Nell Holowachuk Fund
- New Family Legacy Fund
- North Central Family Centre Hopes and Dreams Fund
- North Central Family Centre Legacy Fund
- Not Every Dog is Maya Fund
- OptionS Pregnancy Centre Fund
- passion2action INSPIRE Foundation Fund
- Peoples Family Fund
- Pet Vet Support for Remote Communities Fund
- PFM Community Impact Fund
- Prairieview Wealth Management Fund
- Providence4Missions Legacy Fund
- Rainbow Youth Centre Legacy Fund
- Randy Semenchuck & Michele Roland Semenchuck Family Foundation Legacy Funds (2)
- Ray and Marlene Buitenhuis Fund
- Ray Gosselin Red Cloud Bursary Funds (2)
- Regina Auxiliary War Services Fund
- Regina Floral Conservatory Funds (2)
- Regina Food For Learning Legacy Fund
- Regina Humane Society Endowment Fund
- Regina Leader-Post Christmas Cheer Fund
- Regina Paramedics with Heart Fund
- Regina Symphony Orchestra Funds (2)
- Regina Transition House Flow-Through Fund
- Regina Work Preparation Centre Fund
- Rick Turnbull Family Fund
- Ritenburg Family Foundation Fund
- Robbie Curtis Memorial Scholarship
- Robert B. McClelland North Okanagan Fund
- Roberto Roman Memorial Fund
- Robert Perry Legacy Fund
- Rod McDonald Giving Funds (2)
- RPCI Good Mourning Fund
- Sarita and Roy Pandya and Donna and Doug Pomfret Community Fund
- Saskatchewan Roughrider Foundation Funds (2)
- Saskatchewan Roughrider Foundation George Reed Legacy Fund
- Saskatchewan Sports Hall of Fame Sheila Kelly Legacy Fund
- Saskatchewan Community Foundation Funds (2)
- Saskatchewan Vital Community Funds (2)
- SASW Scholarship Fund
- SCEP CENTRE Legacy Fund
- Scholarship Fund
- Scott Collegiate Alumni Scholarship Fund
- Shelly and Edward Duce Fund
- South Shore Community Foundation Fund
- Southwest Homes Legacy Fund
- Spay it Forward: The Stefani Langenegger Legacy Fund
- Square One Community Impact Fund
- Stan Doucette Memorial Fund
- SUMA Legacy Fund
- Summer Bash YQR Legacy Fund
- Susan MacPhail Legacy Fund
- Sylvia Wilson Scholarship Fund
- The Bill and Helen Davidson Foundation Fund
- The DEK All Nations Healing Hospital Foundation Fund
- The Johnny Z Healthy Minds Funds (2)
- The MacKenzie Art Gallery Operating Endowment Fund
- The Saros Cowasjee Small Animal Foundation Fund
- The Second Lieutenant Andrew Naismith Benevolent Fund
- The Shyanne Parsons Foundation Fund
- The Steven Dale Ripplinger Legacy Fund
- Thiel Family Legacy Fund
- TJH Legacy Fund
- Tom & Julia Webb Community Fund
- Trina & Avery Heartfelt Fund
- Truth and Reconciliation Funds (2)
- Verma Shore Hooper Legacy Funds (2)
- Victoria Gbinigie Legacy Fund
- Virginia Okudolo Family Foundation Fund
- Wain Birch Family Foundation Fund
- Whitespruce Fund
- YMCA of Regina Funds (2)
- You Matter Foundation Funds (2)

FINANCIAL STATEMENTS (AUDITED)

As at December 31, 2025, with comparative figures for 2024

STATEMENT OF FINANCIAL POSITION	2025	2024
ASSETS		
Current Assets		
Cash	\$12,361,236	\$1,600,798
Accounts Receivable, Prepaid Expenses, Property Held for Sale	\$253,766	\$306,564
Impact Investments	\$169,000	\$153,000
Total Current Assets	\$12,784,002	\$2,060,362
Impact Investments – Long-Term Portion	\$317,748	\$487,000
Pooled Investments	\$150,002,754	\$122,088,897
Intangible and Tangible Capital Assets	\$2,008,497	\$2,007,615
TOTAL ASSETS	\$165,113,001	\$126,643,874
LIABILITIES		
Current Liabilities		
Accounts Payable, Accrued Liabilities, and Deferred Revenue	\$760,221	\$388,140
Charitable Assets Under Administration	\$3,815,504	\$106,882
TOTAL LIABILITIES	\$4,575,725	\$495,022
NET ASSETS		
Legacy Funds (Endowments)	\$113,791,740	\$91,303,631
Accumulated Appreciation – Legacy Funds	\$28,881,039	\$21,986,087
Flow-Through Funds (Non-Endowments)	\$14,403,885	\$9,312,152
Internal Reserves	\$3,460,612	\$3,546,982
Total Fund Balances	\$160,537,276	\$126,148,852
TOTAL LIABILITIES & NET ASSETS	\$165,113,001	\$126,643,874

STATEMENT OF OPERATIONS AND CHANGES IN FUND BALANCES

REVENUE	Operations & Internal Reserves	Legacy & Flow-Through Funds	2025 TOTAL	2024 TOTAL
Contributions	\$120,444	\$29,439,672	\$29,560,116	\$5,653,941
Contributions - Royalty Revenue		\$875,866	\$875,866	\$687,095
Investment Returns (Income, Realized and Unrealized gains or losses)	\$432,857	\$14,373,595	\$14,806,452	\$17,746,076
Lotteries and Raffles		\$161,230	\$161,230	
Shared Services	\$48,009		\$48,009	\$13,149
Fund Administration	\$8,403		\$8,403	\$545
TOTAL REVENUE	\$609,713	\$44,850,363	\$45,460,076	\$24,100,806
EXPENSES				
Grants to Charities	\$200	\$7,304,132	\$7,304,332	\$7,182,746
Investment Management Fees	\$19,767	\$836,367	\$856,134	\$788,522
Life Insurance Premiums, Royalty Taxes, Direct Fund Expenses, and Amortization	\$5,413	\$176,238	\$181,651	\$54,147
Lotteries and Raffles		\$92,706	\$92,706	
Administration	\$643,875	\$1,992,954	\$2,636,829	\$2,080,967
TOTAL EXPENSES	\$669,255	\$10,402,397	\$11,071,652	\$10,106,382
FUNDS				
Increase (decrease) in net assets	\$(59,542)	\$34,447,966	\$34,388,424	\$13,994,424

*These are a shorted representation of the full audited financials. To view our full audited financial statements, please request a copy from finance@saskfoundation.ca or they are available for download on the website at www.saskfoundation.ca

Growing impact starts with *you*.

Thank you to all of the incredible individuals,
families, and organizations who grow with us
to make a bigger difference each year.

Give back and make an impact today.

EMERGENT WOMEN AND CHILDREN'S FUND

This fund provides immediate support of up to \$2,000 to women and children in need. No barriers, no questions asked — just help when it's needed most.

By removing small barriers, we can prevent life-altering consequences - and create a ripple effect of positive change.

Give today.



TRUTH AND RECONCILIATION FUND

This fund supports charities that are addressing the Calls to Action. This includes activities focusing on education, culture, and language. An Indigenous-led group of advisors make decisions for the Fund and where its money goes.

Give today.



VITAL COMMUNITY FUND

This fund supports focus areas identified through our Vital Signs community research. It currently supports initiatives including safe and affordable housing, food insecurity, mental health services, and sustaining community infrastructure.

Give today.



Charity number: 890271448 RR0001
www.SaskFoundation.ca